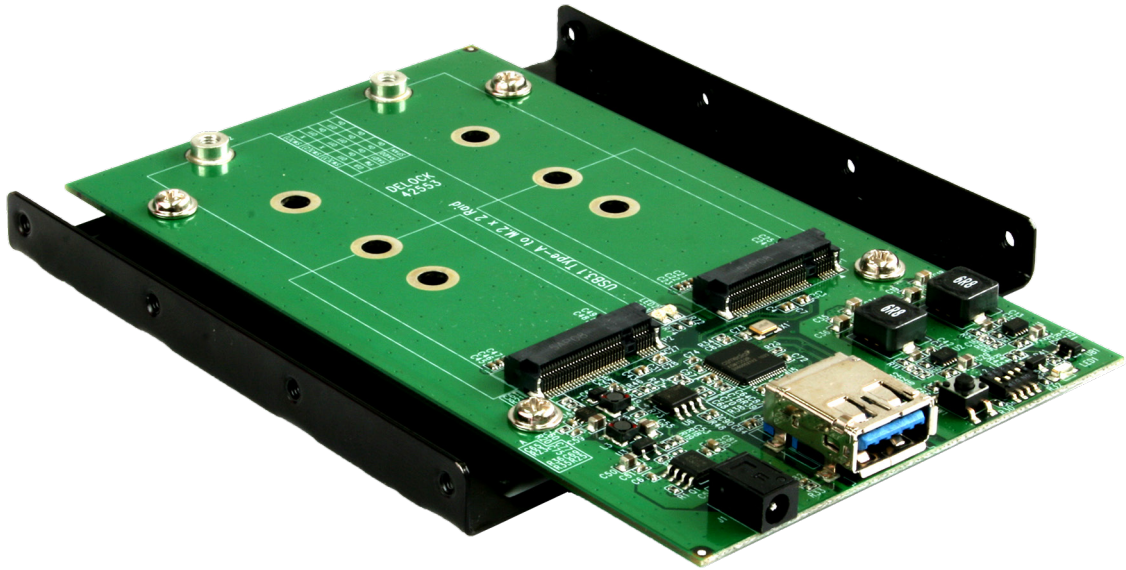


3.5" metal frame 2 x M.2 key B > USB 3.1 Gen 1 (for housing 20 pin) with RAID

Chipset: Asmedia ASM1352R

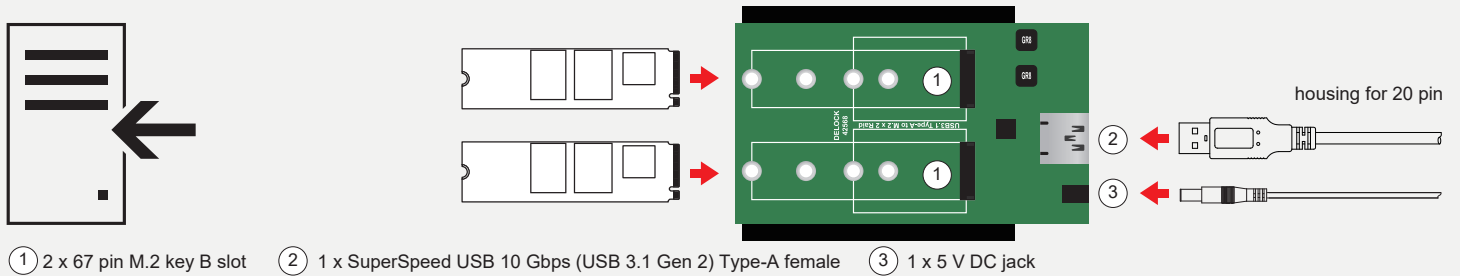
Supports M.2 modules in format 2280, 2260, 2242 and 2230 with key B or key B+M based on SATA

Support RAID 0,1, SPAN (BIG) mode



Cable content

- Cable USB 3.1 type A Male to Housing 20 pin
- DC jack to 4 Pin power cable



 Windows Server-2003/ Vista/ 7/7-64/8/8-64/8.1/8.1-64	 Mac OS 10.8.2	 Linux ex Kernel 4.6	 DATA transfer rate up to 5 Gb/s	 Hot Swap Plug & Play	 LED indicator for power & acces
---	-----------------------------	--------------------------------------	--	------------------------------------	---